



FLORENCE PARK
TIPTREE

The Giovanni

Plots: 46*, 49, 50, 52**, 53**



Traditional
Semi-Detached
2 Bedroom House



925
sq.ft



2
Bedrooms



2
Bathrooms



2
Floors



2
Parking
Spaces†

- Separate living room with French doors leading to the garden
- Open plan kitchen/dining room
- Generous master bedroom
- Second double bedroom with en-suite bathroom
- Family bathroom

* mid-terrace house

** private garage or carport plus one dedicated parking space

† depending on plot

Viewing by Appointment Only

☎ 01621 814 040

✉ info@florenceparkhomes.co.uk

🖱 florenceparkhomes.co.uk

First Floor

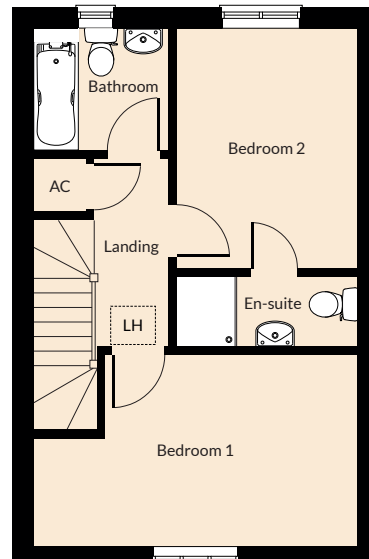
Bedroom 1
5.11m x 3.05m
16'9" x 10'0"

Bedroom 2
2.87m x 3.81m
9'5" x 12'6"

En-suite
2.87m x 1.14m
9'5" x 3'9"

Bathroom
2.15m x 1.96m
7'1" x 6'5"

Landing
1.04m x 2.99m
3'5" x 9'10"



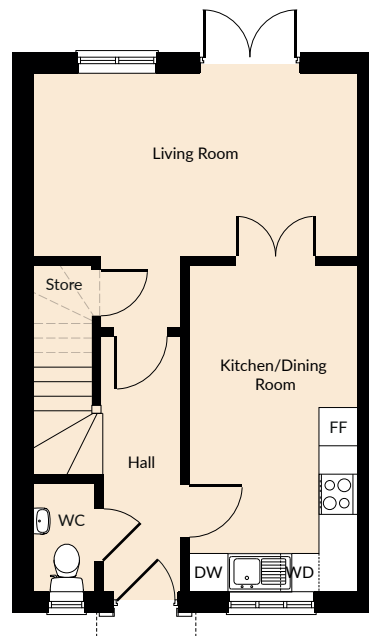
Ground Floor

Living Room
5.11m x 2.91m
16'9" x 9'7"

Kitchen/Dining Room
2.67m x 5.15m
8'9" x 16'11"

Hall
1.24m x 4.04m
4'1" x 13'3"

WC
0.99m x 1.73m
3'3" x 5'8"



Florence Park Phase One Development

A new development of quality, traditional styled 2, 3, 4 and 5 bedroom homes within the desirable village of Tiptree, Essex, CO5 0UH.



Dimensions stated are within 100mm (4") but should not be used as a basis for furnishings, furniture or appliance spaces etc. Dimensions for such purposes must be verified against actual site measurements.

FF = Fridge Freezer WM = Washing Machine AC = Airing Cupboard LH = Loft Hatch WC = Water Closet DW = Dishwasher